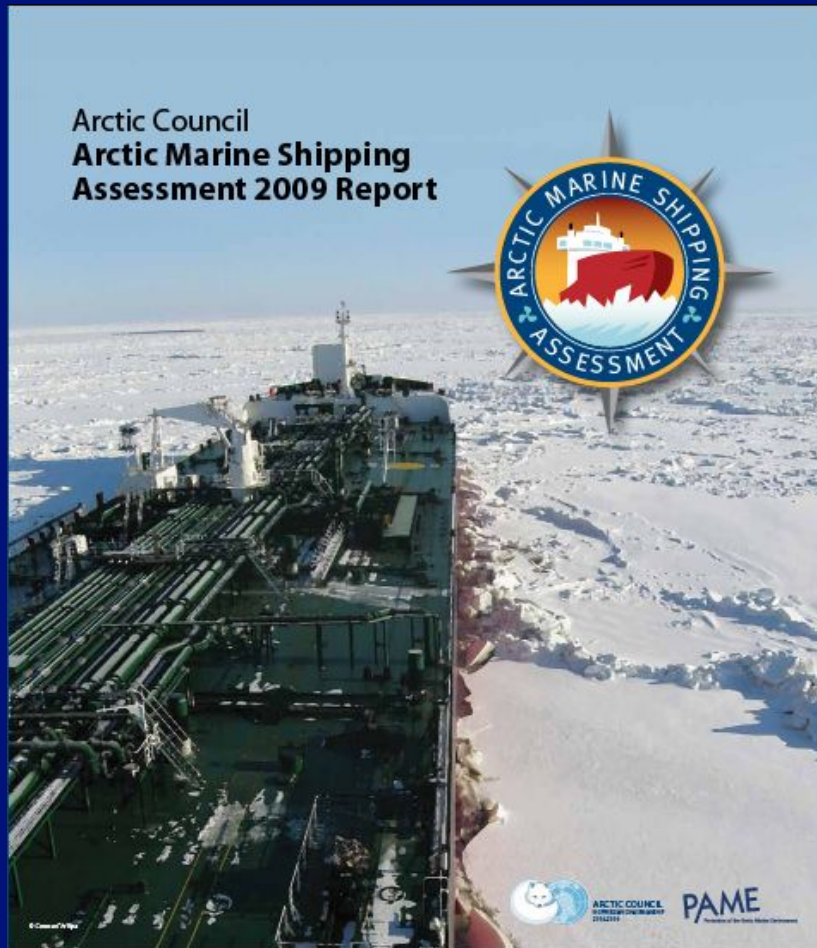
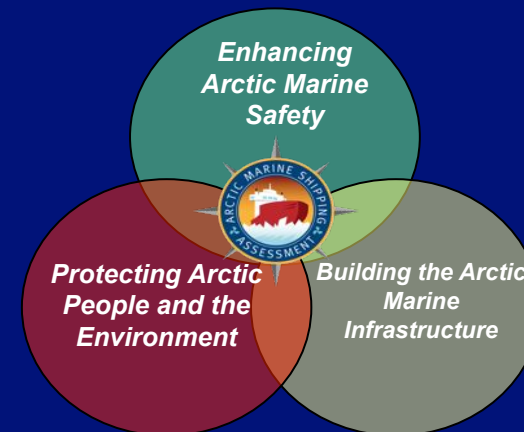


Arctic Marine Shipping Assessment of the Arctic Council (2005-09)



- Protection of the Arctic Marine Environment Working Group (PAME)
- Leads: Canada, Finland, USA
- Foci: Marine Safety & Environmental Protection
- 200+ Experts ~ 13 Major Workshop ~ 14 Town Hall Meetings
- Mix: Globalization + Climate Change + Geopolitics + Science
- Key Challenges ~ Many Non-Arctic Actors & Stakeholders
- 17 Recommendations:





AMSA 2009 Report:

- **Baseline Assessment ~ Marine Activity**
- **Arctic Council Policy Document ~ Negotiated Report Approved 29 April 2009 ~**
 - **Strategic Guide**

www.pame.is

[Report & AMSA Background Papers]



Successful Initiatives Requiring International Partnerships

- **Expert Recognition ~ Broad “Shipping” Definition**
- **Baseline Marine Use Data from the Arctic States**
- **Use of Scenarios ~ Plausible Futures of Arctic Marine Use**
- **Reaching Out to Arctic Communities:**
 - **Town Hall Meetings & Special Studies**
 - **AMSA Team ↔ Governments ↔ Permanent Participants**
- **Maritime Industry Contributions ~ Funding & Expertise**



Impediments & Challenges

- **Lack of a Secretariat ~ Coordinating Body (ACIA, OAGA, AMSA, Biodiversity)**
- **Funding ~ Not Upfront, Voluntary**
- **Data / Information Sharing ~ More Trust ~ Not Yet Seamless & Timely**



Future (10 Years) ~ Coordinated Arctic Marine Projects

- **Engage Arctic Residents Early & Throughout**
- **Increasing Complexity ~ Ecosystems-based Management, Marine Spatial Planning, Marine Reserves, LMEs, PSSAs**
- **Ability to Deal with Host of Actors & Stakeholders (including commercial interests of global industries)**
- **Pooling & Sharing Data ~ Timely, Transparent**
- **Arctic Marine Access ~ For Science & Operations**